



Sealed with Confidence

www.sealco.co.nz



Protection for your investment

You've nurtured your project through the development of the concept, the detail drawings and specifications, and finally to the excitement of construction. The last thing you need is to see all that energy, effort and investment ruined by overlooking a small but vital consideration like watertightness.

Water is the ultimate adversary for any construction project. Seepage, leaks, rising damp, penetrating damp, and lateral damp, all can undermine the integrity of your structure and compromise durability.

Sealco offers an extensive range of waterproofing membrane systems, backed up by professional service and sensible warranties. We make it our business to ensure your project is completely protected from the effects of water.

When you engage Sealco Waterproofing, you enjoy the peace of mind of:

- Fully integrated, proven waterproofing systems
- Outstanding expert and experienced service
- Hands-on commitment to quality from planning right through to application

expertise (n.) expert opinion,
or skill or knowledge

“Every Aspect Of Our Business Is Dedicated To Waterproofing
– Our Products, Systems, Methods And Services”

Jeff Fitness – Managing Director, Sealco Waterproofing

In fact, waterproofing is the only thing we do. That means we can offer you a wealth of experience and knowledge for all construction and maintenance projects from residential to large commercial.

Our highly skilled team bring decades of experience in waterproofing to your project, wherever your construction and the environment meet: from foundation, walls, carparks, gutters and roofs, bathrooms, to bridges, tunnels, ponds and viaducts.

Quality is everything. While we know our products and systems deliver effective watertight solutions, you needn't take our word for it. Our systems comply with the New Zealand Building Code and the E2/AS1 requirements. And, since we began Sealco, we have had our systems independently assessed by BRANZ or BEAL to ensure our products remain at the forefront of durability.

impervious (adj.) not able to be penetrated, as by water



**Waterproofing is
what we do**

Tried and true products

“Protecting our customers’ buildings from the damaging effects of water is our primary focus. Our aim is to provide competitive, value-for-money solutions without compromising the technical integrity of the system.”

reliable (adj.) able to be relied on, dependable

Our waterproofing systems have been both soundly tested and proven. We have developed a suite of products backed by a quality management system for application that, together, deliver fail-safe results.

At Sealco, we work with you through all stages of your project from design, including the development of the specification and installation details, right through to system installation. Together we determine the most durable solution. We then work with Sealco’s fully trained application specialists to ensure they meet our rigorous installation standards.

We are aware that the quality of the product and installation is one of the most important aspects to the ongoing watertightness of your project. Historically, waterproofing supply companies have distributed their products via a network of independent applicators. At times this has left specifiers feeling caught between supplier and applicator, or worse still, just when they’re needed the applicator is no longer trading.

In order to gain more control over the quality of the application process, Sealco operates a full and ongoing comprehensive training and assessment program for our applicators. Before any membranes are installed on your projects, any inexperienced applicators are required to attend our in-house training program. The applicators are then trained, tested and then assessed before they are supplied with an independent approved applicator certification. Furthermore, ongoing assessments and inspections of their work is carried out on regular occasions.

quality (adj.) having a high degree of excellence



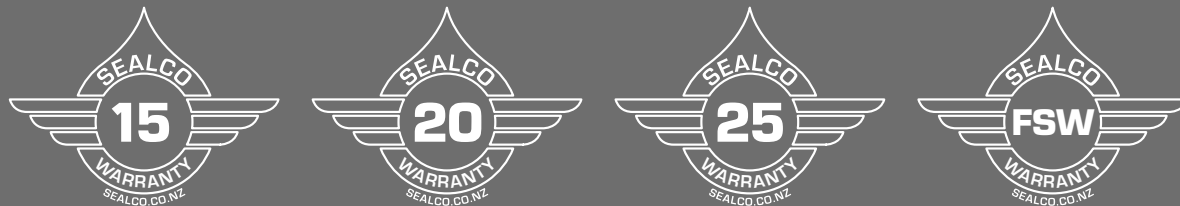
Quality assured products and installation

Sealco Manufacture-Backed Warranty

Sealco is proud to stand by our products and therefore we provide a material warranty when installed by an approved applicator to our specific specifications and with the Sealco complete system. Each individual product in our range is covered by a manufacturer's-backed warranty that warrants the materials performance in service ranging from 15 to 25 years depending on the product and system provided.



Factory Backed Warranties



The process is very simple to action and Sealco will be on hand to guide you through the system process



The product and installation is covered by one company which means only one contact to organize any steps in the system.

Full System Warranty

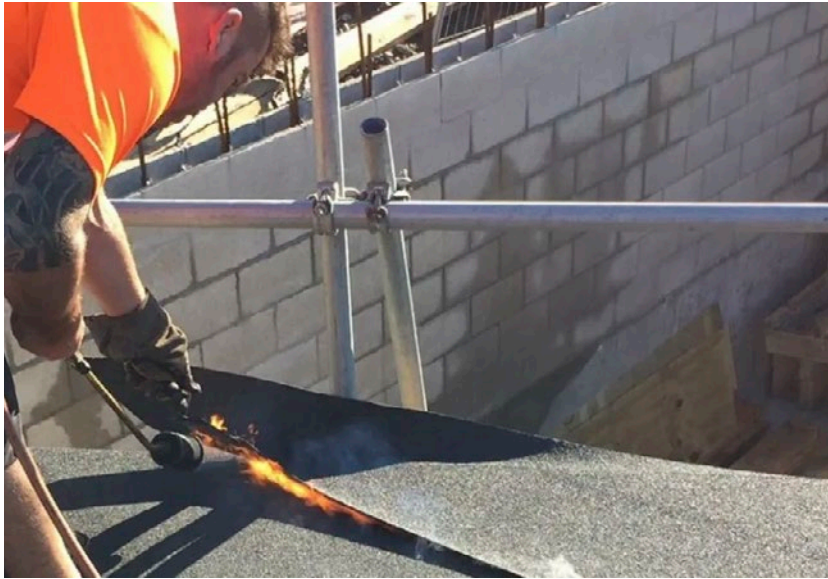
The Sealco full system warranty is a warranty that covers both membrane and workmanship on the complete installed waterproofing system by an approved Sealco Ltd installer. A single warranty that covers both the supply and install of our selected products.

Traditionally warranties are supplied separately from an installer and the supplier. Often, later on, when there is potentially an issue, there can be an uncertainty of responsibility between the installer and the supplier which can potentially create grief for the builder or construction owner.

Through a select group of our approved installers, Sealco Ltd is confident to back our product as well as the workmanship of the installer for the period as warranted.

Applicator Training

Applicator training and assessments are crucial for the long-term performance of the Sealco membrane systems. Sealco provides an extensive training program for the installation of all of our products. Training is provided both in-house or externally, nationally or internationally with our manufacturing partners. Our three-step process is regarded by our installers as being a helpful process in training, assessing and upskilling from new to experienced installers.



Stage 01

Practical and theory training in our training facility. This includes product knowledge, building industry training and practical installation on the purpose built modules. There will be an element of classroom training and there will be both a practical and theory assessment on the completion of the training session. Depending on the skill level of the trainees, the training can take from 4-6 hours.

This first stage is to provide the installer with basic application techniques to be able to transfer out into the construction place. It should also give the installer basic knowledge on what to look out for before, during and on completion of the membrane application.

Stage 02

On-site assessments are carried out on completion of projects. This is to be carried out by a Sealco Ltd technical representative at a time suitable to both the installer and Sealco.

This assessment gives our technical representative the opportunity to assess the skill level of the installer in “real-world” conditions and how the application and completed finished project has been carried out and finished. Then the assessor will ask the installer questions about how they prepared the substrate, how they installed the product, how they finished (detailed) and if there were any issues they needed to overcome.

Stage 03

Sealco will help guide the installer through a nationally recognised qualification such as the ITO National Certificate in Membranes or the Licence Building Practitioner program. The installer will initiate the program and Sealco will be able to assist and confirm with the assessor the skill level of the installer to enable achievement of the desired program or certificate.

- On completion and passing of Stage 1 training, you will receive a personalised certificate as confirmation of training and achieving the individual stage requirements.
- On completion of the Stage 2 assessment, your certificate is updated to “Achievement of stage 2”.
- On completion of Stage 3, you will be provided with a new certificate of “Stage 3 achievement”. Including notification of approval to complete Full System Warranty approved projects.





EcoTUFF Thermoplastic Polyolefin (TPO)

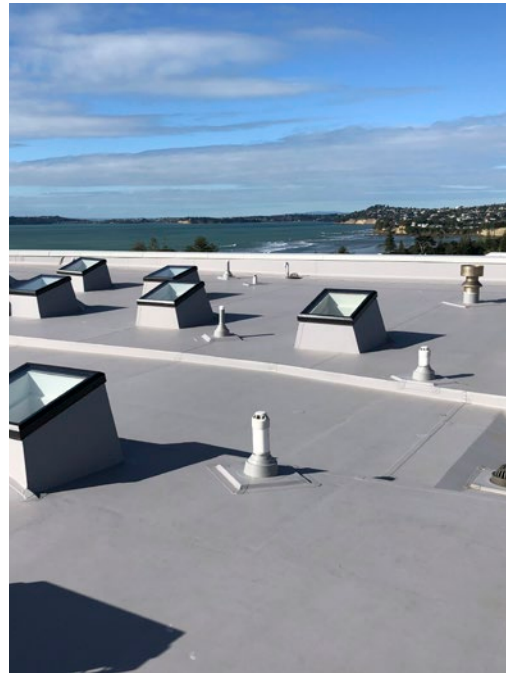
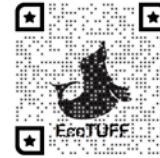


Introduced to NZ in 2004, EcoTUFF has gained much popularity in the New Zealand market mainly due to the quality, price and added features. EcoTUFF TPO thermoplastic polyolefin membrane is a co-polymer of polypropylene and ethylene propylene rubber that has been formed into a membrane sheet and reinforced with a heavy duty polyester scrim. This means you get a flexible rubberised material with the ability to be heat welded for permanent secure detailing.

EcoTUFF is manufactured by the largest and most technically advanced manufacturer in the USA and is well known internationally to be one of the best performing membranes available. It is BRANZ Appraised and comes with a full system of heat welded accessories to ensure watertightness in all areas of your roof. EcoTUFF provides absolute watertight integrity for low-slope and pitched roofs, gutters, parapets, pond liners, balconies, under floating decks and roof gardens of commercial and residential buildings.

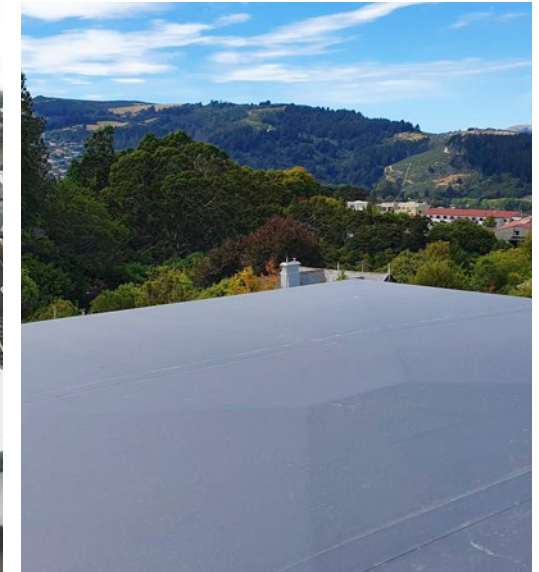
A 'second generation' single ply product, EcoTUFF marries the advantages of previous generation materials while eliminating their limitations. The result is a roofing membrane that is faster and easier to install yet offers outstanding resistance to weathering, temperature extremes, ultraviolet exposure and a whole wide variety of industrial chemicals.

Sealco are proud to be the first in the market with our EcoTUFF TPO membranes.



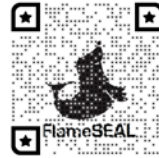
FEATURES AND ADVANTAGES

- Full System 20/20 Warranty available for EcoTUFF TPO
- Heat weldable seams and detailing
- Full range of welded accessories
- Wide range of use
- Quality trained installer network
- Water potable
- Manufacturer-backed 20 or 25 year product warranty
- Extra large sheets - up to 3.7m wide
- Polyester reinforced sheet
- Eco Friendly
- Light colours available
- BRANZ Appraised
- Experienced Technical Support





FlameSEAL Modified Bitumen



FlameSEAL has many outstanding features, making it the ultimate choice when selecting a torch-on membrane. It's superior qualities of tensile strength, elongation and tear resistance sets FlameSEAL apart as the ideal durable solution for your waterproofing requirements. A comparison of product data sheets shows FlameSEAL to have the highest mechanical properties of any modified bitumen available. FlameSEAL has good flexibility at both high and low temperatures.

The FlameSEAL COMBO's superior qualities of tensile strength, elongation, tear resistance and the SBS underside is an ideal solution for your extreme environment waterproofing requirements and makes ease of installation. The FlameSEAL COMBO is manufactured to have amongst the highest mechanical properties of any modified bitumen available. The FlameSEAL COMBO APP/SBS combination has good flexibility at both high and low temperatures.

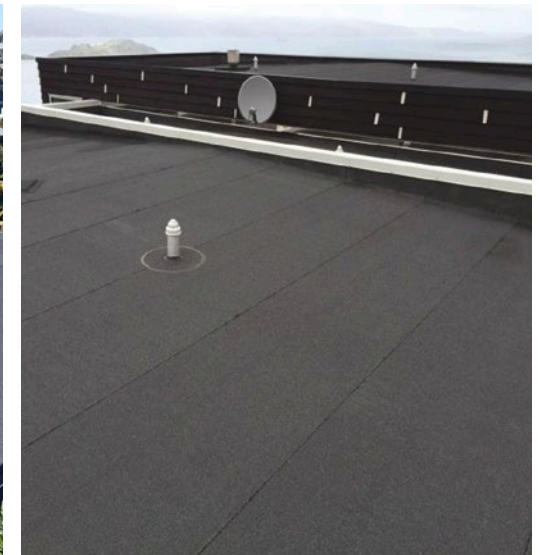
FlameSEAL SpeedSEAL is a peel & stick self-adhesive version of the FlameSEAL base and cap sheet. The self-adhesive properties of the SpeedSEAL allows for no-flame application meaning the installation is faster, no fire hazard and more cost effective in labour reduction. The SpeedSEAL peel & stick provides all of the benefits of the FlameSEAL two-layer modified bitumen without the dangers of an open flame installation.



FEATURES AND ADVANTAGES

- Warranty
- Two Layer Application
- Flexibility
- Material Performance
- Welded System
- Mineral Chip finish
- Durability
- High Puncture Resistance
- Peel & Stick SpeedSEAL
- Compliance
- Full System 20/20 Warranty available for FlameSEAL and SpeedSEAL double layer

FlameSEAL is an SBS or APP modified bitumen membrane reinforced with 180 gsm non-woven polyester fabric.





WarmSEAL Insulated Warm Roof



Sealco insulated warm roof system is a roof that has the insulation installed above the structure with the waterproofing membrane installed on the top of this insulation. The system is designed to keep the outer of the building insulated and “warm” from the external elements.

The system is designed to keep cold or hot external climatic conditions isolated while the insulation system ensures warm or cool temperatures as desired inside the building. The system may also be designed as an externally fitted installation where there may not be any space for the standard internal insulation system within the roof design.

WarmSEAL Roofing is both cost effective and carries an extremely high insulation value giving you the best options for keeping the heat in... or out.

Superwarm Polysio Insulation

Sealco’s Isolex family of polyisocyanurate (“polyiso”) roof insulations offer the building owner the perfect combination of features so important for long-term performance. Aside from enhanced energy savings and the other benefits shown below, Isolex provides excellent initial installation cost as well as attractive life cycle payback rates.



FEATURES AND ADVANTAGES

- Fully Insulated Roofing Structure
- Light Weight
- Fire Performance
- Environmentally Friendly
- Manufacture-Backed 20year Product Warranty
- Higher R-Values Compared to Other Insulation
- Lower costs and quicker installation
- Tapered Option
- Compatible with Sealco Membrane Options
- Light colours available
- H1 Insulation compliant

Sealco warm roof system is a roof that has the insulation installed above the structure with the waterproofing membrane installed directly over the insulation.





GreenSEAL Garden Roof



Besides the decorative benefit, GreenSEAL garden roofs can provide food, temperature control, hydrological benefits, architectural enhancement, habitats or corridors for wildlife, recreational opportunities, and in large scale it may even have ecological benefits.

The practice of cultivating food on the rooftop of buildings is sometimes referred to as rooftop farming. Rooftop farming is usually done using GreenSEAL green roof systems, hydroponics, aeroponics, air-dynaponics and even container gardens.

Roof gardens are most often found in urban environments. Plants have the ability to reduce the overall heat absorption of the building which then reduces energy consumption. The primary cause of heat build-up in cities is the absorption of solar radiation by roads and buildings in the city and the storage of this heat in the building material and its subsequent re-radiation. Plant surfaces however, as a result of transpiration, do not rise more than 4–5 °C above the ambient and are sometimes cooler. This then translates into a cooling of the environment between 3 and 11 degrees Celsius, depending on the area on earth (in hotter areas, the environmental temperature will cool more). *This study was performed by the University of Cardiff.*

Sealco's GreenSEAL garden roofs provide insulation, environmental and aesthetic benefits to your roof-top. Furthermore, GreenSEAL slows down the effect of rain and stormwater flowing into the city waterways assisting with drainage systems.



FEATURES AND ADVANTAGES

- Full Sealco System Supplied
- Improving City Waste Water
- Increase oxygen
- Compatible with Sealco WarmSEAL Roofing
- Manufacture-Backed 20year Product Warranty
- Reduces Urban Island Heat Effect
- Increase Longevity of your Membrane
- Improve Thermal Efficiency
- Improve your Environment

Garden Roofs from Sealco Waterproofing Systems





EpiSPAN EPDM

SPANSEAL Ethylene Propylene Diene Monomer



EpiSPAN is a high quality EPDM rubber membrane (ethylene-propylene-diene monomer) used to provide waterproofing protection for a variety of roofing and exterior deck applications.

The EpiSPAN system includes the EpiSPAN EPDM membrane, EpiSEAM lap tape and EpiSTICK adhesive. Also included as part of the system are the underflashing and overflashing tapes and associated sealants.

The EpiSPAN system is a fully bonded rubber membrane applied over concrete, steel, fibre cement boards or construction plywood substrates.

EPDM gives superior UV resistance and elongation over most other membranes available internationally



EpiSPAN EPDM is available in up to 6m wide sheets ex NZ and 15m wide from the manufacturer



DekMASTER is a high quality, fully cured PVC vinyl material impregnated onto a non-woven polyester fabric back. DekMASTER is an aesthetic trafficable and waterproofing membrane all-in-one and is regarded as one of the best trafficable PVC membranes available in New Zealand. It will protect your home and provide a watertight exposed deck membrane system. DekMASTER is long lasting, UV and mildew resistant, non-skid, puncture resistant, welded application, easy to clean, cooler to the touch than most other membranes, and soft underfoot.*

Extend your living space with a beautiful deck



DekMASTER PVC decks give you a superior watertight deck that is both aesthetic to look at and comfortable to relax on

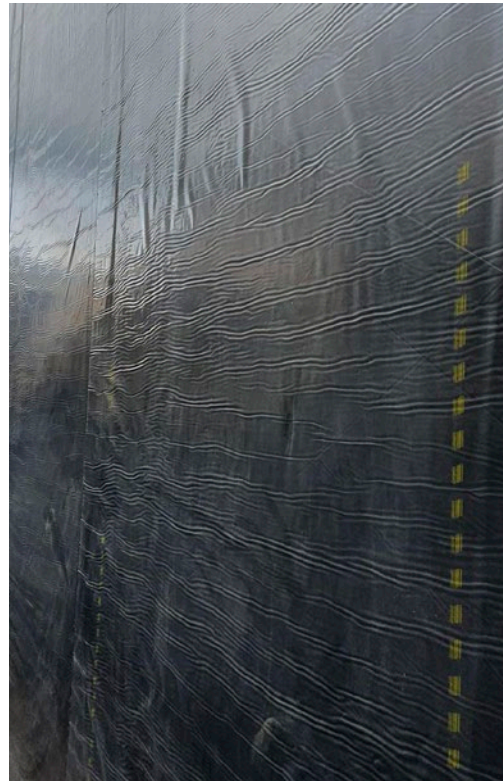


BondSEAL (formerly BituBOND) is a self-adhering sheet membrane consisting of (1.5 mm) of rubberized asphalt laminated to 4 mils (0.1 mm) of polyethylene to form a minimum 60-mil (1.6 mm) membrane. The combination of these two excellent waterproofing materials provides a high-performance, extremely durable waterproofing barrier. BondSEAL membrane is used for vertical and horizontal waterproofing on structural foundation walls and decks. Below-grade foundation walls, tunnels, split slabs, plaza decks and parking decks are all areas where BondSEAL may be applied. BondSEAL also may be used in interior areas such as mechanical rooms. BondSEAL should be covered and protected with Sealco DrainSEAL drainage composites. BondSEAL can be used for installations between -5°C and 30°C.



FEATURES AND ADVANTAGES

- Can be adhered to many substrate options
- Peel & stick applied – no flame hazard
- 20 year product warranty
- Self protected by PE (polythene) film
- Excellent tear and puncture resistance
- Can hold up to 3.5m static head.
- Excellent self-adhesive adhesion
- Self sealing around mechanical fixings (nails, screws, etc)
- Flexible and easy to install
- Watertight immediately upon installation
- Extensive history of use in New Zealand
- BRANZ Appraised



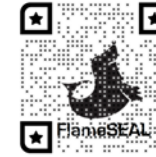
High-performance, extremely durable waterproofing barrier





FlameSEAL Anti-Root membrane is a modified bitumen membrane reinforced with 180gsm non-woven polyester fabric. The FlameSEAL anti-root has very good flexibility at both high and low temperatures and is formulated with an anti-root additive which gives the membrane exceptional root resistance so is ideal for use under ground as a tanking membrane.

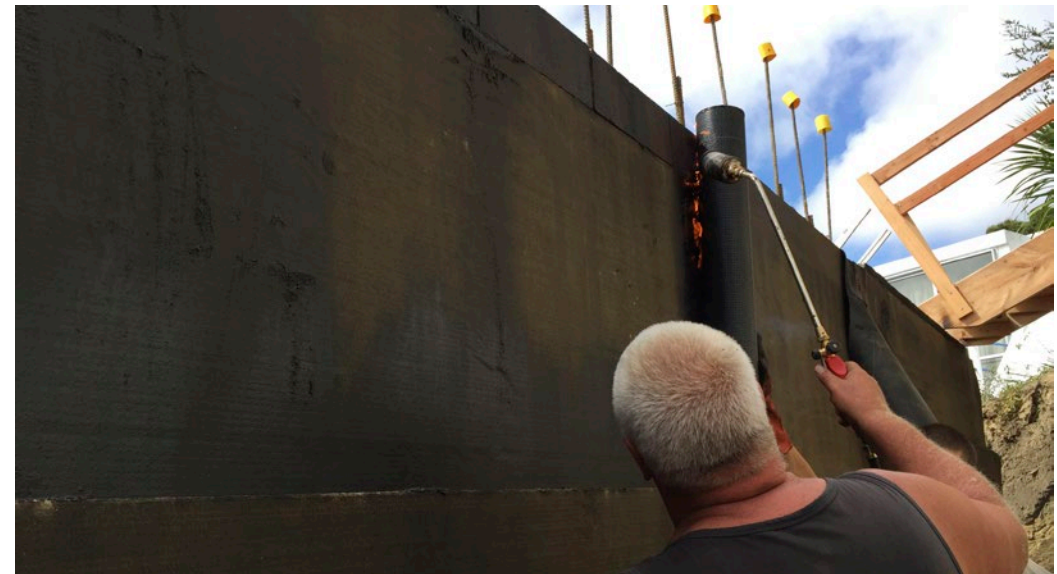
The FlameSEAL superior strength, elongation, and tear resistance also makes the membrane extremely durable. The single layer system is ideal for lower pressure tanking whereas for high pressure systems and deeper hole tanking (over 4m head), a two layer system can be utilised for a more secure and stronger protection for your structure.



FEATURES AND ADVANTAGES

- Anti-Root Membrane
- Flexibility
- Welded System
- Durability
- Compliance
- Single or Multi-Layer Application
- Material Performance
- 15 or 20 Year Factory Backed Warranty
- High Puncture Resistance

FlameSEAL
Anti-Root
Tanking
installed on
residential
and
commercial
properties
nationwide





BentoSEAL is a geosynthetic clay liner (GCL) consisting of a thin layer of low permeable sodium bentonite and two layers of geotextile: PP woven fabric and PP non-woven fabric. The Geosynthetic Clay Liner, or GCL, is a new environmentally friendly composite waterproof and impermeable material. It fills bentonite particles between the woven geotextile and non-woven geotextile, and composes the non-woven fabric fibres on the upper layer through bentonite particles, through special techniques and equipment and on the woven fabric on the lower layer by means of acupuncture. At the same time, according to the needs of the project, you can also supply a

version with a layer of HDPE film (high-density polyethylene film) on the bentonite sheet, to adapt to the laying of special environment, in order to achieve double waterproof, impermeable effect. BentoSEAL has been proven to provide engineering performance and durability.

Waterproof properties of BentoSEAL natural sodium bentonite blanket: Natural sodium base bentonite with high swelling (bentonite particles suction volume expandable itself after 10 ~ 30 times). After the bentonite waterproofing sheet is immersed in water, the sodium base bentonite absorbs, under a certain extrusion (from basal, temporary protective layer, backfill

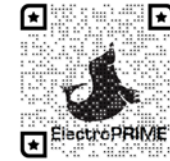
and waterproof sheet fibre internal tension, etc.), alternates between molecular arrangement, internal space narrows to form a dense gel structure layer, water molecules can't break through, thus giving the waterproof effect. The permeability coefficient of 5 x 10 to 11 m/s. The higher the extrusion pressure, the higher the density and the better the waterproof effect.

Classification and specification of BentoSEAL natural sodium bentonite waterproofing: The natural sodium bentonite waterproof sheet finished rolls supplied by Sealco Ltd are needle-punched (GCL-NP/N) and coated (GCL-of /N) according to their categories.



FEATURES AND ADVANTAGES

- Green and environmental protection
- Simple construction
- Permanent waterproofing, excellent performance
- Strong self-repair ability
- Use in high-risk tanking applications



Introducing ElectroPRIME by Sealco. This is the only way to specify a conductive leak detection layer directly under a membrane system that doesn't compromise the adhesion of the system and comes with a Sealco product warranty. ElectroPRIME is a water based electrically conductive primer which ensures a quick and accurate membrane integrity test with the Sealco ElectroSCAN scanner. The ElectroSCAN test can be performed at any time after the membrane has been installed and has the added advantage of ongoing future testing to ensure future membrane integrity.

How it works:

ElectroPRIME creates the closest conduction layer possible, directly under the membrane. Simply apply a light spraying of water to the top of the membrane and then turn on the low voltage current on the ElectroSCAN scanner. When ElectroSCAN travels over a breach, a circuit is completed due to the moisture transferring through the membrane, alerting us to the breach with the strongest, most reliable signal possible, unlike inconclusive methods such as flood tests, there is no guessing, just quick reliable test results.



FEATURES AND ADVANTAGES

- Made in Canada. Installed in Canada and USA for 10 years.
- Provides the required conductivity per ASTM Guide D7877-14 and ASTM D8231-19 for valid ELD testing on conventional membrane roof assemblies, including black EpiSPAN EPDM.
- Compatible with fully-adhered, mechanically attached and torch-down membranes. EcoTUFF TPO, FlameSEAL Torch-on, Dekmaster and EpiSPAN EPDM.
- Compatible with high voltage and low voltage ELD methods.
- Excellent adhesives qualities with Sealco Ltd's membrane adhesives.
- A low cost option for peace of mind assurance.
- A guarantee of watertight quality finish with the added ability to carry out future tests.
- Proof of a watertight finish from the installer.
- Rest assurance of a membrane system that will work and can be easily tested to prove.
- Eliminates the need for flood testing which can create all sorts of problems in itself to carry out and achieve accurate results.
- Less than 30-minute dry time under normal conditions.
- Retesting can be performed for the life of the membrane, should a breach occur at a later date.
- Matt black to ensure complete coverage
- Water-based and low VOC (non-flammable & Solvent-free)
- Roll, spray, or pre-apply to cover boards, IsoLEX WarmSEAL polyiso insulation or construction plywood.
- Easily applied to transitions and details where other conductive mediums cannot be used.
- Coverage rate of approximately 100sqm per 20L drum. Some surfaces may be more porous and may use more product per sqm.
- Peace of mind assurance of workmanship and signoff of the roof once completed.
- Ability to find leaks easily and quickly on new or older roofs.



Sealco Ltd's new range of Italian asphalt shingles and metal-line bring beauty and life to your structure. With many options for styles and colour, there will be a Shingle-Line that is perfect for you. Choosing Sealco shingle-Line means choosing a roof that is varied, eclectic and colourful, resistant to any climate and extreme weather condition. On top of that, it does not deteriorate over time, is very quiet, light and stable, and is easy to install and maintain. In addition to high quality products, we offer a full range of accessories and services providing a true "roofing system", with snow catchers, vents, condensation barriers, etc.. A high-quality roof is a roof that is exclusively made with "certified" components.

A "multi-layered" guarantee. Silica sand, Tia Juana bitumen, pre-impregnated fibreglass and a surface of ceramised granules which give the tiles their colour and finish. The granules are coloured using a very high temperature ceramisation process and inorganic pigments. This guarantees permanent colourfastness, protects the underlying bitumen layers from ultraviolet rays and prevents the shingle from deteriorating over time. Fibreglass provides exceptional strength and dimensional stability. Blown, modified bitumen ensures a high degree of water-proofing.

From earth to sky: The process of making shingles begins with a search for the right raw material and continues with a fully-automated manufacturing process, which uses the latest machinery and quality control tools. Our highly sophisticated logistical system packs and stores the products straight off the assembly line, delivering them to customers all over the world. Sealco's manufacturer pays particular attention to the preparation of expert installers, who undertake continuous training in Sealco's Christchurch training centre.



ShingleLINE Architectural



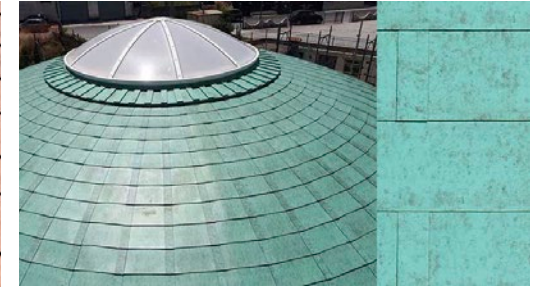
PRESTIGE COMPACT



PRESTIGE ELITE



PRESTIGE TRADITIONAL



PRESTIGE ULTIMETAL



MASTER COPPO



MASTER



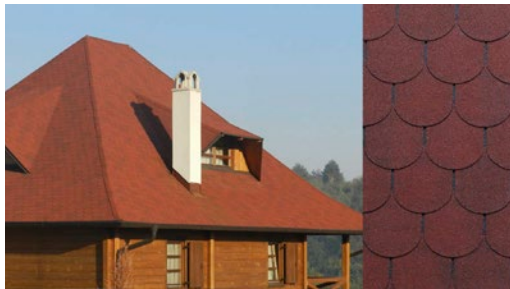
PREMIUM MOSAIK



PREMIUM LIBERTY



PREMIUM RECTANGULAR



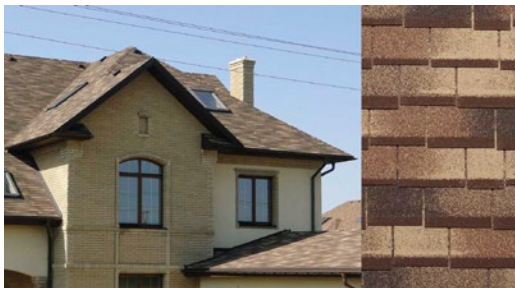
PREMIUM TRADITIONAL



PREMIUM GOTHIK



EURO POLYMERIC SHINGLES FOREST



EURO POLYMERIC SHINGLES CHALET



EURO POLYMERIC SHINGLES VERSATILE



"GREEN" SHINGLES TEGOSOLAR



"GREEN" SHINGLES ACTIROOF



Lexcoat FLASH is a polyurethane based waterproofing material. It is a single pack material that cures with atmospheric moisture. High quality liquid applied elastomeric coating.

Lexcoat FLASH is an ideal solution for re-roofing and remedial repairs on existing membrane roofs. Old membrane roofs can be easily re-coated and brought back to a new standard with minimal disturbance to the existing roof or structure.

Waterproofing of roof-tops, balconies and terraces. Waterproofing under tiles in bathrooms and balconies. Suitable for flat roof applications with ponding water, providing the heavy duty application option is used.

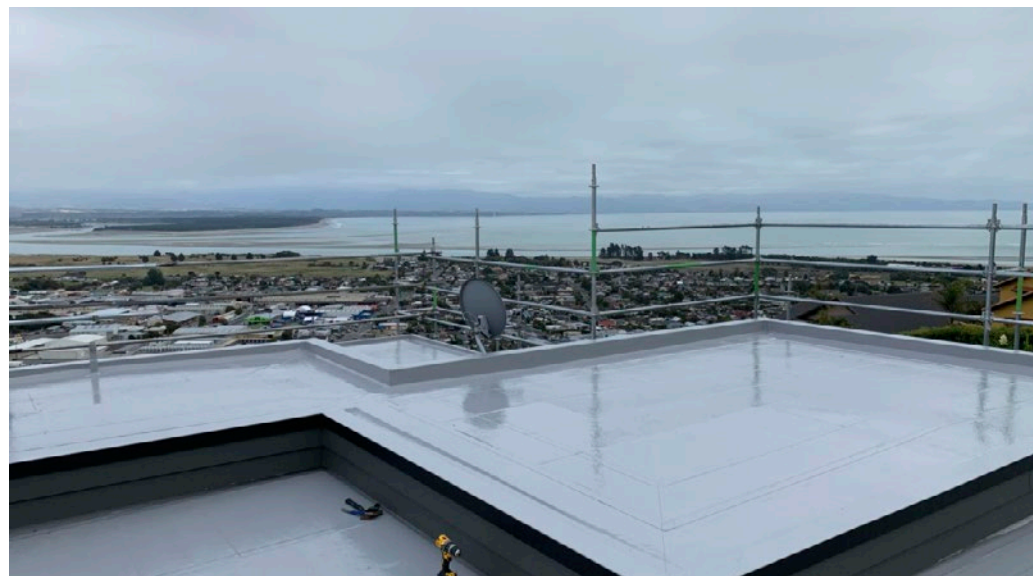


FEATURES AND ADVANTAGES

- **Cost Effective Repair**
A cheaper alternative to extend the life of your membrane
- **Ease of Installation**
Simply clean, repair if necessary, prime & apply 2 coats of Lexcoat FLASH
- **Foot Trafficable**
Can be used on decks with applying silica sand for non-slip surface
- **Will cover many substrates**
Concrete & Cement Fibreboard Roofs, Butyl, TPO, Bitumen & Fibreglass Membranes
- **Don't Open Roofs to Elements**
Eliminates the need to open up roofs by not requiring to remove old membranes
- **Up to a 15 year product warranty available**
With a re-coat after 7 years and ongoing checks and maintenance

Properties:

- Elastomeric / Flexible
- Easy application
- Crack bridging properties
- High build
- Resistant to water and UV
- Excellent adhesion to most substrates
- Suitable for foot traffic or light vehicular traffic
- Remains flexible in sub-zero conditions



Accessories & Outlets

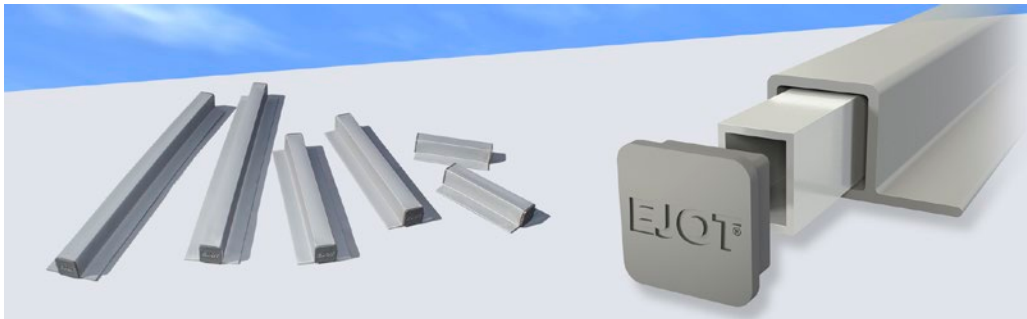


EJOT Bar

The membrane-friendly bridging system for single ply TPO.

EJOT EJObar is the perfect low-cost solution to a multitude of single-ply TPO membrane applications, for flat roofing and mechanical & electrical contractors alike.

- Clean, professional solution
- No penetration of the membrane is required - maintains watertight integrity of the roof
- Practical, adaptable and very low in cost
- Suitable for most single-ply membranes
- Easy to hot weld in position and creates a very strong fix
- Very effective when used free-standing
- Ideal for carrying mechanical & electrical equipment, walkway systems, applied cladding systems - and many solar applications



U-Anchor

The U2400-TPO is a lightweight rooftop attachment system consisting of a U-Anchor 2000 Series plate and cover membrane. The cover membrane is factory sealed to the top of the plate. The U2400-TPO provides a positive, watertight, manufacturer accepted attachment for mechanically attached and fully adhered TPO single-ply membranes.

U-Anchor Attachment

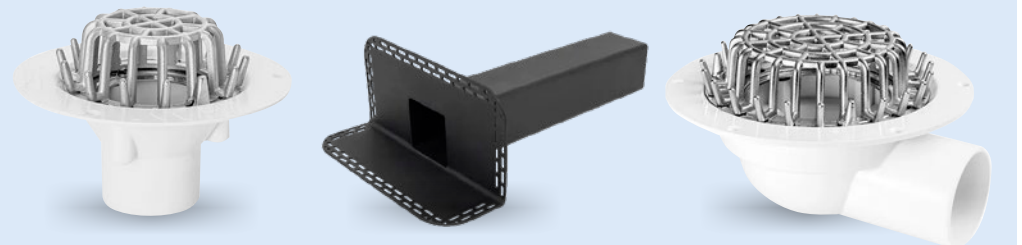
The U2400-TPO is attached by fastening through the roofing assembly into the structural decking with 2-8 approved fasteners. The membrane cover is then hot air welded around the perimeter to the roof membrane. Fastener selection is dictated by the system assembly, deck type, and the project engineer. Refer to installation instructions and the specified roofing material manufacturer requirements before installing.



Drains & Overflows

Roof drains provide entry to tracking for the removal of water off roof tops. Sealco offers the newest technology when dealing with membrane to flange adhesion and all consist of a special compound thermoplastic rubber meaning they are highly resistant against low temperatures.

Sealco offers a range of drains to fit all waterproofing and drainage needs.





The best decision you will ever make...

...is the most important project decision you have to make. The reality is that there are many, each as vital in its consequences as any other. But one of the best decisions you can ever make is to protect your investment, by ensuring your project is impervious to water. You invest a lot of effort to ensure your project functions well and looks good. We can help you ensure it stays that way...always.

“Many factors need to be considered in order to come to a decision for your waterproofing. Sealco have experienced staff that will be able to guide you through the best solution to your waterproofing needs”.

reassurance (n.) restoration of confidence



Sealco Limited
H/O CHRISTCHURCH
W/H AUCKLAND
0508 SEALCO (732526)
5/18 Taurus Place, Bromley,
Christchurch 8062
www.sealco.co.nz

To email us:
Get in Touch: hello@sealco.co.nz
Technical: help@sealco.co.nz
Christchurch: chch@sealco.co.nz
Auckland: akl@sealco.co.nz
Administration: admin@sealco.co.nz